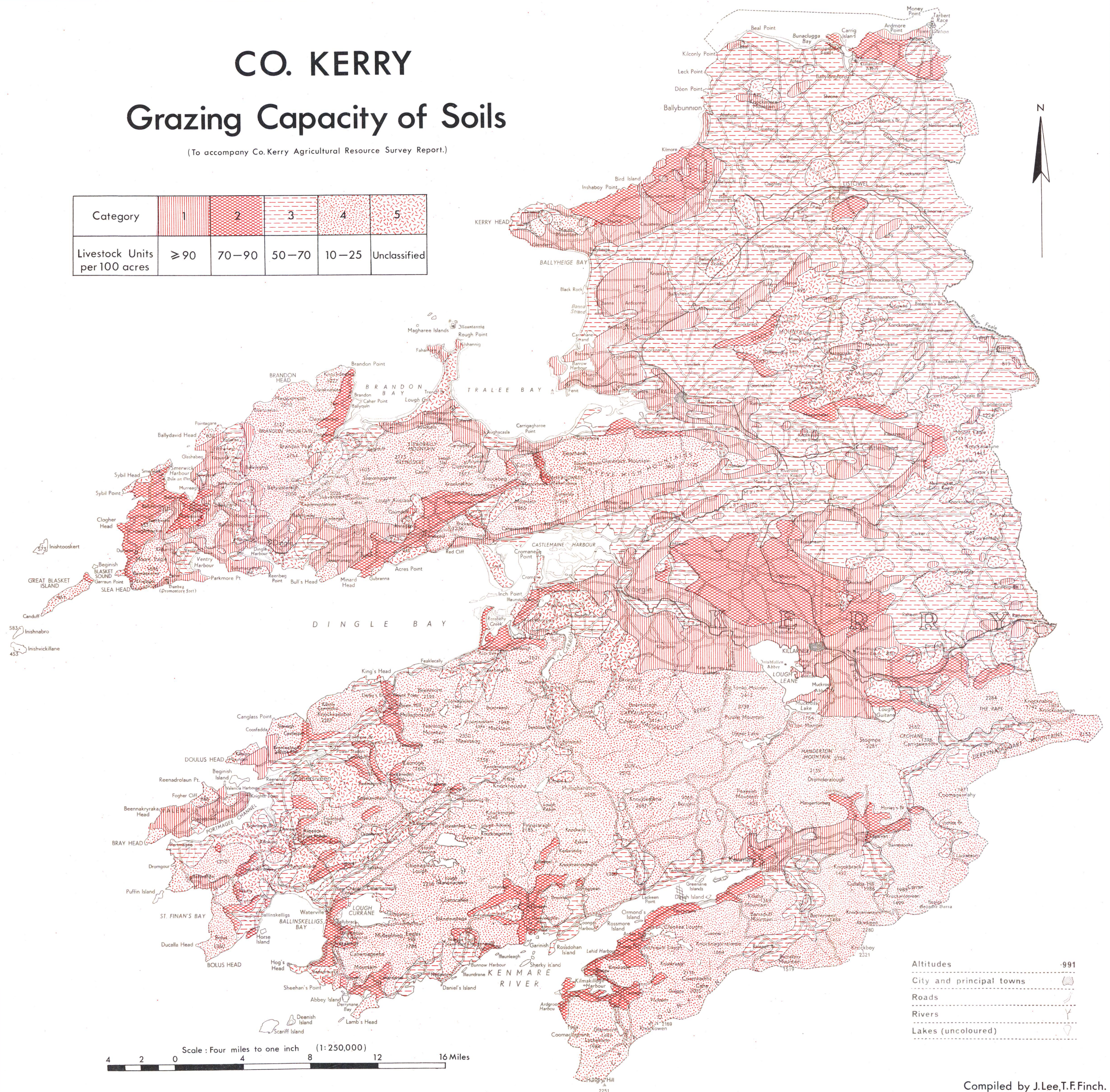


CO. KERRY

Grazing Capacity of Soils

(To accompany Co. Kerry Agricultural Resource Survey Report.)

Category	1	2	3	4	5
Livestock Units per 100 acres	≥ 90	70-90	50-70	10-25	Unclassified



- Altitudes 991
- City and principal towns
- Roads
- Rivers
- Lakes (uncoloured)

Scale: Four miles to one inch (1:250,000)

4 2 0 4 8 12 16 Miles

Compiled by J. Lee, T. F. Finch.